



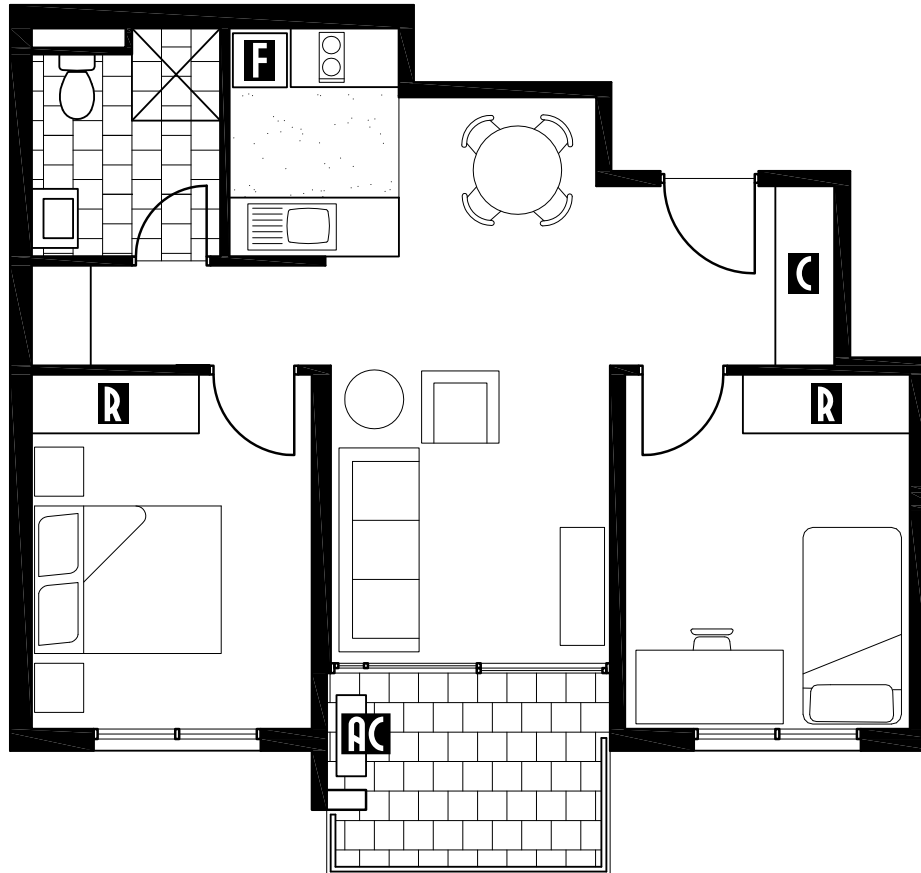
APARTMENT TYPE 1

901, 1001, 1101, 1201,
1301 & 1401

Living Area 58.1m²

Balcony Area 5.9m²

Total Area 64.0m²



GLOBE
EAST END

LEGEND

F Fridge **R** Robe **C** Cupboard **AC** Air Conditioner

Disclaimer: This layout and area may be subject to amendments and dimensional changes to suit final construction drawings, grid layouts and Authority requirements. Area have been calculated using the Property Council of Australia definitions. Areas are measured from the centreline of common walls, the outside of corridor walls, the outside of external walls and include riser shafts and vertical service ducts.





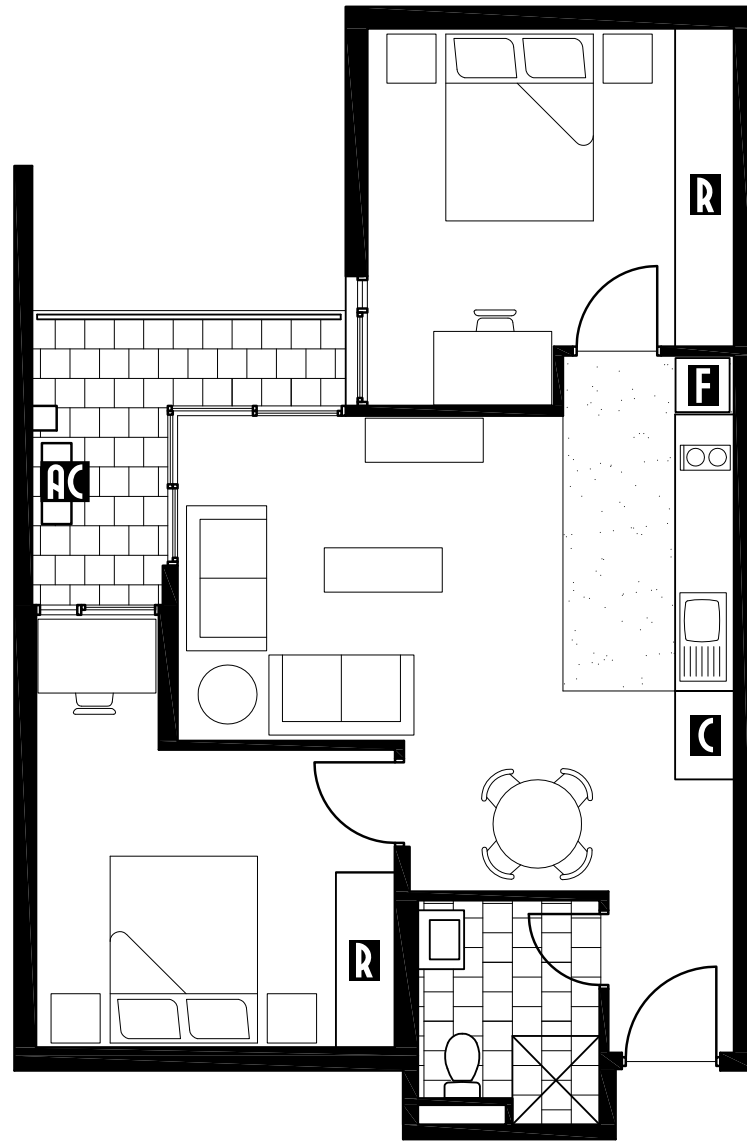
APARTMENT TYPE 2

902, 1002, 1102, 1202,
1302 & 1402

Living Area 63.9m²

Balcony Area 6.3m²

Total Area 70.2m²



GLOBE
EAST END

LEGEND

F Fridge **R** Robe **C** Cupboard **AC** Air Conditioner

Disclaimer: This layout and area may be subject to amendments and dimensional changes to suit final construction drawings, grid layouts and Authority requirements. Area have been calculated using the Property Council of Australia definitions. Areas are measured from the centreline of common walls, the outside of external walls and include riser shafts and vertical service ducts.

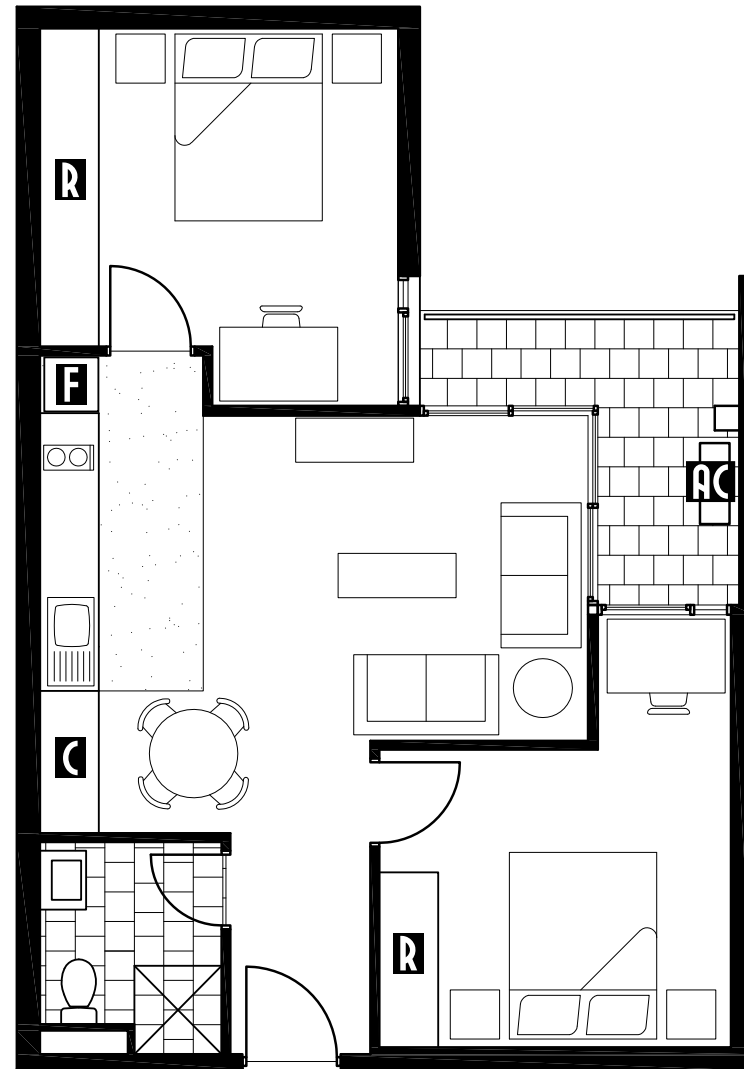




APARTMENT TYPE 3

903, 1003, 1103, 1203,
1303 & 1403

Living Area	62.5m ²
Balcony Area	6.2m ²
Total Area	69.7m ²



GLOBE
EAST END

LEGEND

F Fridge **R** Robe **C** Cupboard **AC** Air Conditioner

Disclaimer: This layout and area may be subject to amendments and dimensional changes to suit final construction drawings, grid layouts and Authority requirements. Area have been calculated using the Property Council of Australia definitions. Areas are measured from the centreline of common walls, the outside of external walls and include riser shafts and vertical service ducts.

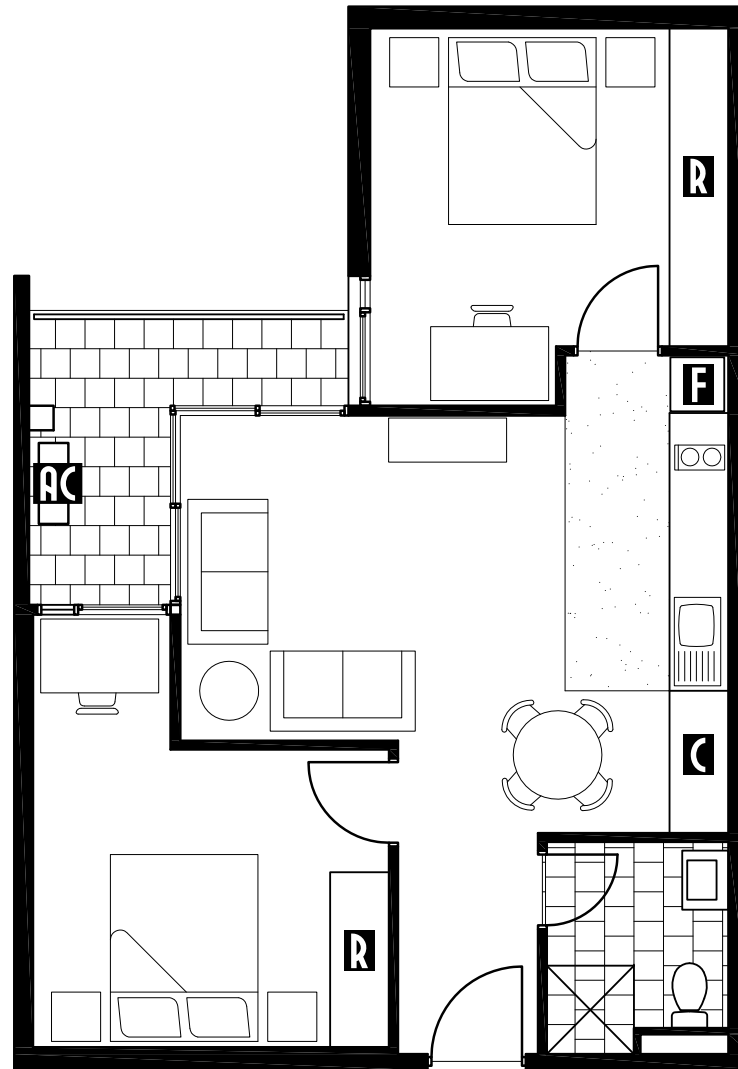


A

APARTMENT TYPE 4

904, 1004, 1104, 1204,
1304 & 1404

Living Area	62.3m ²
Balcony Area	6.2m ²
Total Area	68.5m ²



GLOBE
EAST END

LEGEND

F Fridge **R** Robe **C** Cupboard **AC** Air Conditioner

Disclaimer: This layout and area may be subject to amendments and dimensional changes to suit final construction drawings, grid layouts and Authority requirements. Area have been calculated using the Property Council of Australia definitions. Areas are measured from the centreline of common walls, the outside of corridor walls, the outside of external walls and include riser shafts and vertical service ducts.



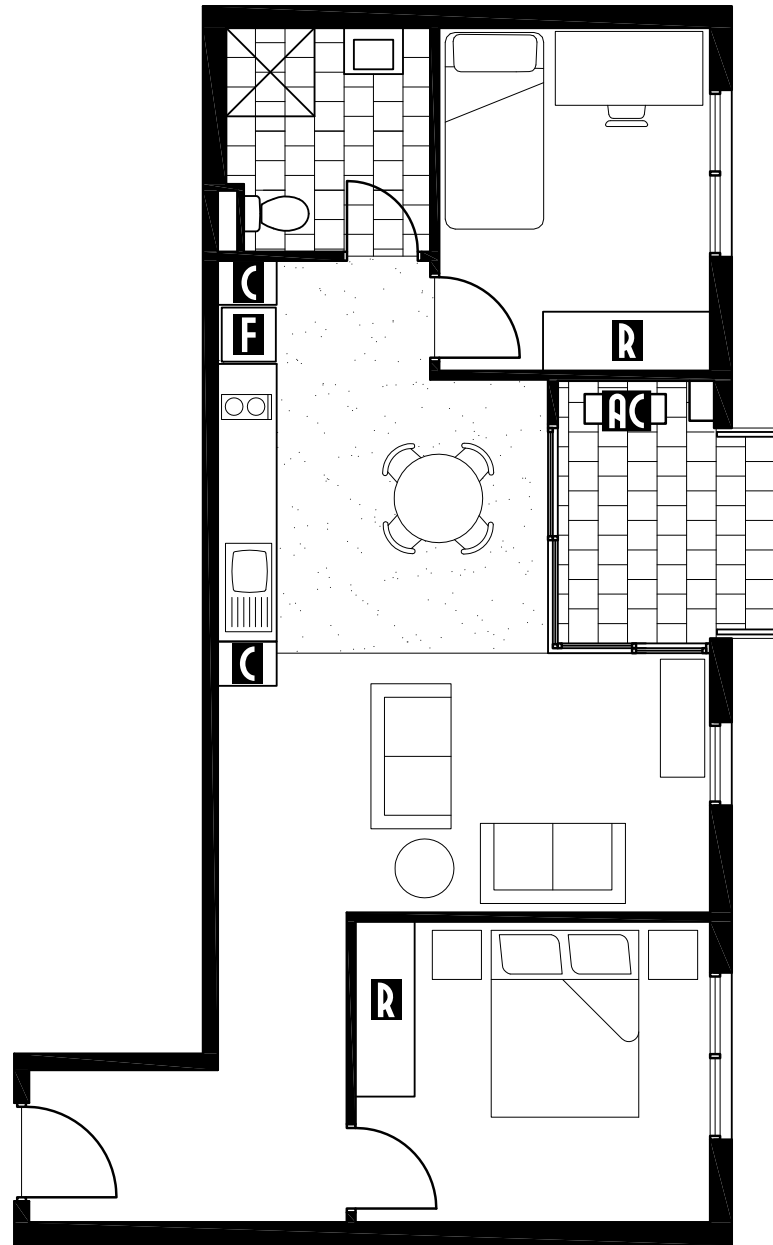
5

APARTMENT TYPE 5

905, 1005, 1105, 1205,
1305 & 1405

Living Area	64.4m ²
Balcony Area	5.6m ²
Total Area	70.0m ²

GLOBE
EAST END



LEGEND

F Fridge **R** Robe **C** Cupboard **AC** Air Conditioner

Disclaimer: This layout and area may be subject to amendments and dimensional changes to suit final construction drawings, grid layouts and Authority requirements. Area have been calculated using the Property Council of Australia definitions. Areas are measured from the centreline of common walls, the outside of external walls and include riser shafts and vertical service ducts.

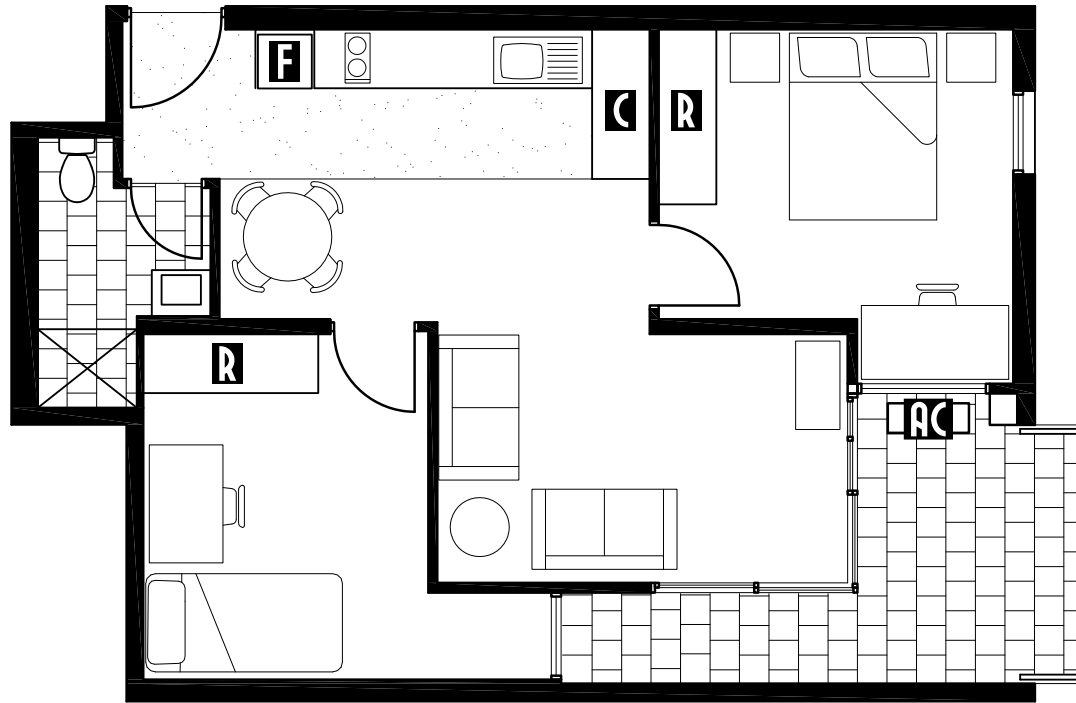




APARTMENT TYPE 6

906, 1006, 1106, 1206,
1306 & 1406

Living Area	57.8m ²
Balcony Area	10.2m ²
Total Area	68.0m ²



GLOBE
EAST END

LEGEND

F Fridge **R** Robe **C** Cupboard **AC** Air Conditioner

Disclaimer: This layout and area may be subject to amendments and dimensional changes to suit final construction drawings, grid layouts and Authority requirements. Area have been calculated using the Property Council of Australia definitions. Areas are measured from the centreline of common walls, the outside of corridor walls, the outside of external walls and include riser shafts and vertical service ducts.

